

LAKE
(WATER SURFACE ELEVATION=968.7)

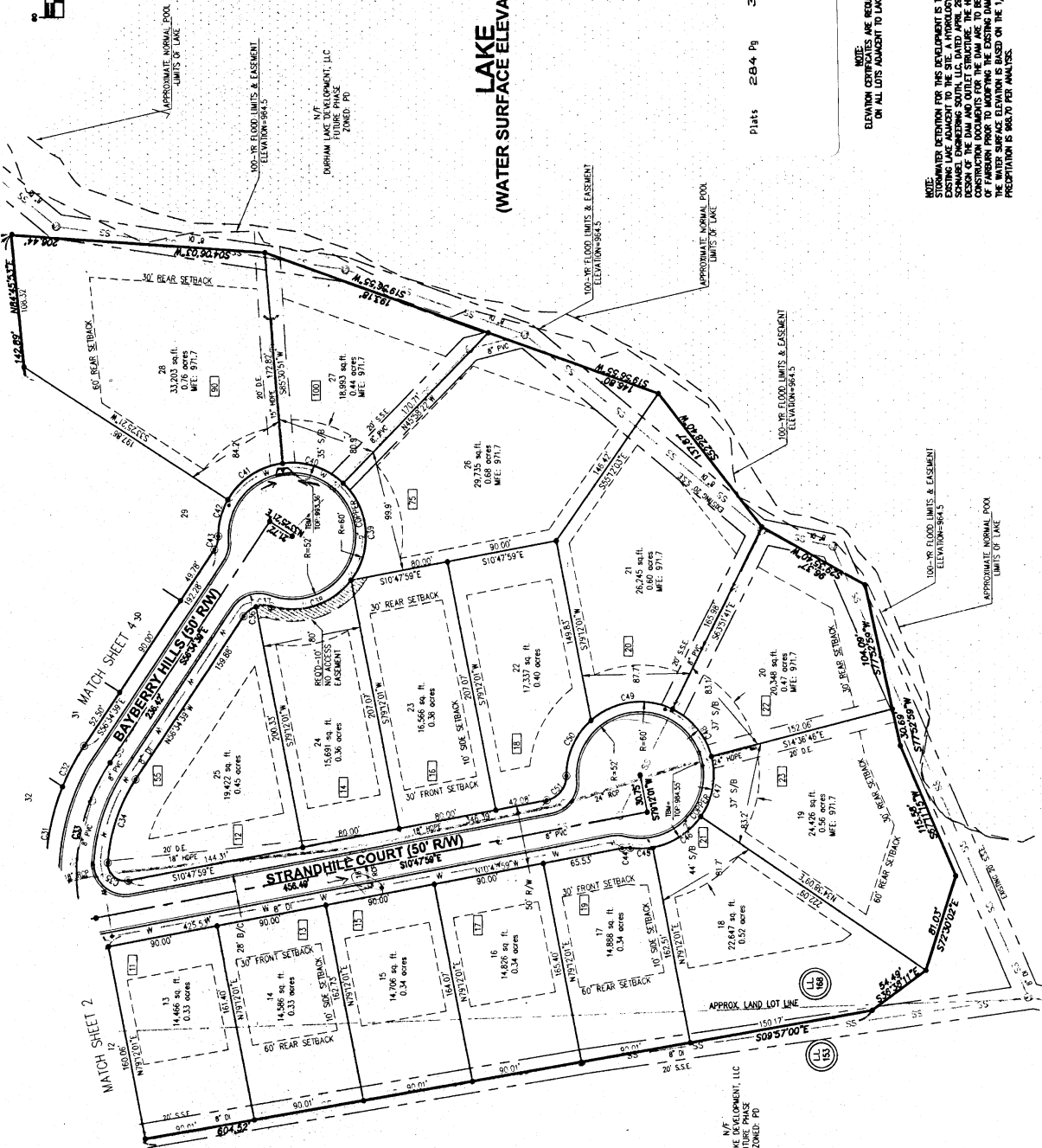
LEGEND

- IRON PIN FOUND (PT)
- 1/2" BARS PLACED/YELLOW (IN FEET)
- COMPLETED POINT
- POWER POLE
- OVERHEAD ELECTRIC
- SERVICEMAN
- SANITARY SEWER LINE
- FIRE HYDRANT
- WATER VALVE
- WATER LINE
- RADIUS
- MINIMUM FOOTING ELEVATION
- JUNCTION BOX
- DOUBLE WING CATCH BASIN
- SINGLE WING CATCH BASIN
- NOW OR FORMERLY
- P.O.C. POINT OF COMMODIMENT
- P.O.B. POINT OF BEGINNING
- D.E. DRAINAGE EASEMENT
- S.S.E. SURFACE EASEMENT
- R/W RIGHT OF WAY
- W.S.E. WATER SURFACE ELEVATION
- LIME LIMITS
- BACK OF CURB TO BACK OF CURB
- PORT OF WAY TO PORT OF WAY
- TEMPORARY BENCHMARK

NOTE:
ELEVATION CHECKS ARE REQUIRED
ON ALL LOTS ADJACENT TO LAKE.

NOTE:
LIMITED INFORMATION FOR THIS DEVELOPMENT IS TO BE PROVIDED WITHIN THE
EXISTING LIME ADJACENT TO THE SITE. A HYDROLOGY ANALYSIS DONE BY
SOMMER ENGINEERING SOUTH, LLC DATED APRIL 29, 2004 WITH A DETAILED
DESIGN OF THE DAM AND OUTLET STRUCTURE. THE ANALYSIS WAS CONDUCTED BY THE CITY
OF FARMERS PRIOR TO ADAPTING THE EXISTING DAM OR OUTLET STRUCTURE.
THE WATER SURFACE ELEVATION IS BASED ON THE 1/2" PROBABLE MAXIMUM
PRECIPITATION IS 968.70 PER ANALYSIS.

PLANS 284 Pg 3



SEAL
MOORE BASS CONSULTING, INC.
135 NORTHPARK PLACE, SUITE 100
STOCKBRIDGE, GA 30281

SHEET TITLE
Final
Subdivision Plat
LL 652, 153, 168 & 189-7th District
City of Farmers, Fulton County, Georgia



REVISIONS

1. 7-6-05	Addressed city comments PHC
2. 8-31-05	Addressed additional comments
3. 9-8-05	Addressed additional comments
4. 9-29-05	Addressed additional comments

DATE 4/11/05
FILE # 01-031
CONTRACT # 888.003.04
DRAWN BY PHC
CHECKED BY WNP
MOORE BASS CONSULTING

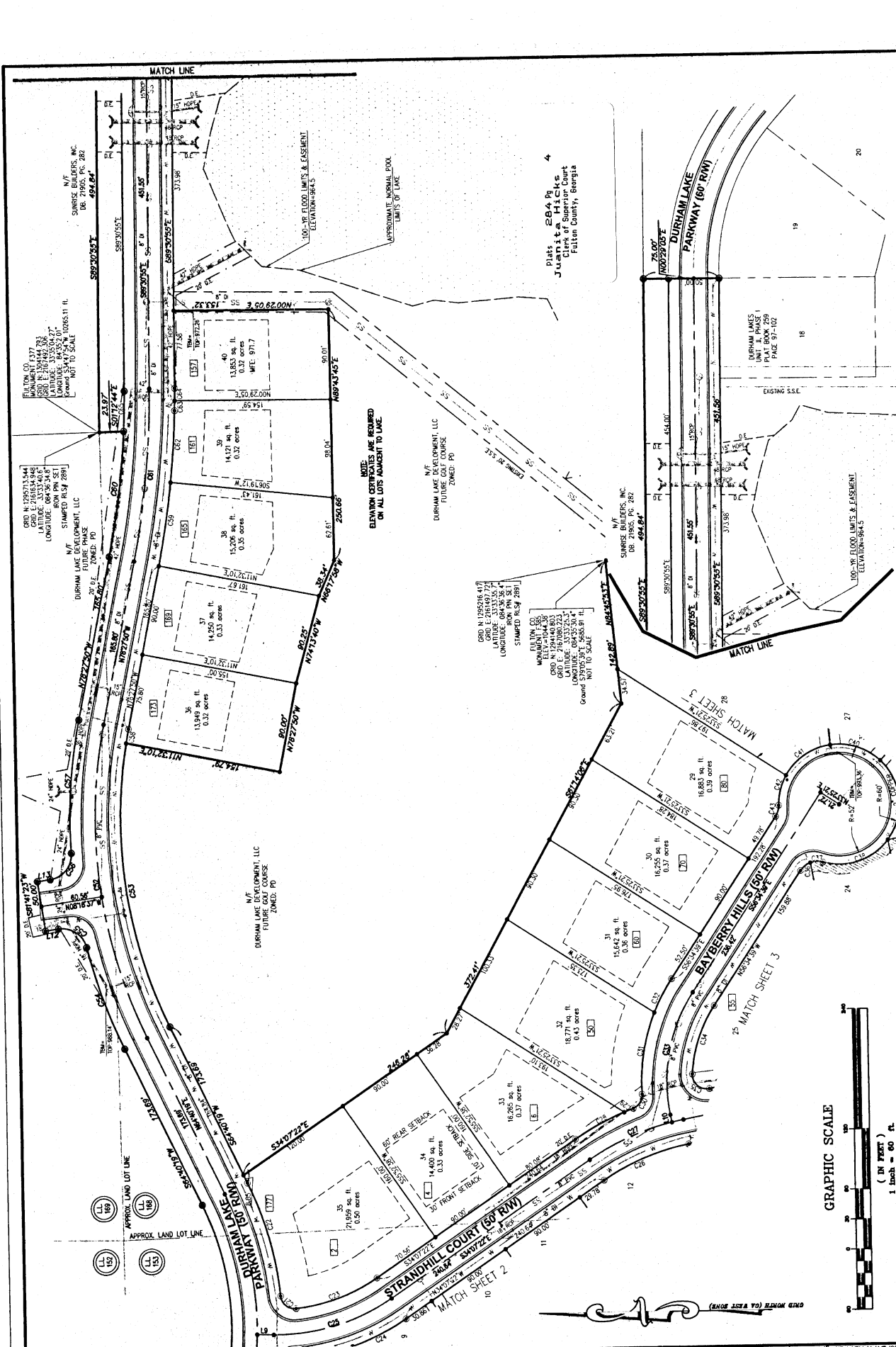
PROJECT
Durham Lake
Unit IV

CLIENT NAME
Durham Lake Development, LLC
135 Northpark Place, Ste. 100
Stockbridge, GA 30281

MOORE BASS

CONSULTING
TALAHASSEE
ATLANTA
29 INDUSTRIAL BLVD. MCDONOUGH, GA 30253
www.moorebass.com
PH: 770.294.6584

SHEET 3 OF 4



SHEET 4 OF 4

Moore Bass
CONSULTING
ATLANTA

TALLAHASSEE
DESTIN
324 INDUSTRIAL BLVD., MCDONOUGH, GA 30233 PH: 770.914.6396

PROJECT: Durham Lake Unit IV

CLIENT NAME: Durham Lake Development, LLC
135 Northpark Place, Ste. 100
Stockbridge, GA 30281

Final Subdivision Plat

LL 152, 153, 168 & 168-7th District
City of Fairburn, Fulton County, Georgia

REVISIONS

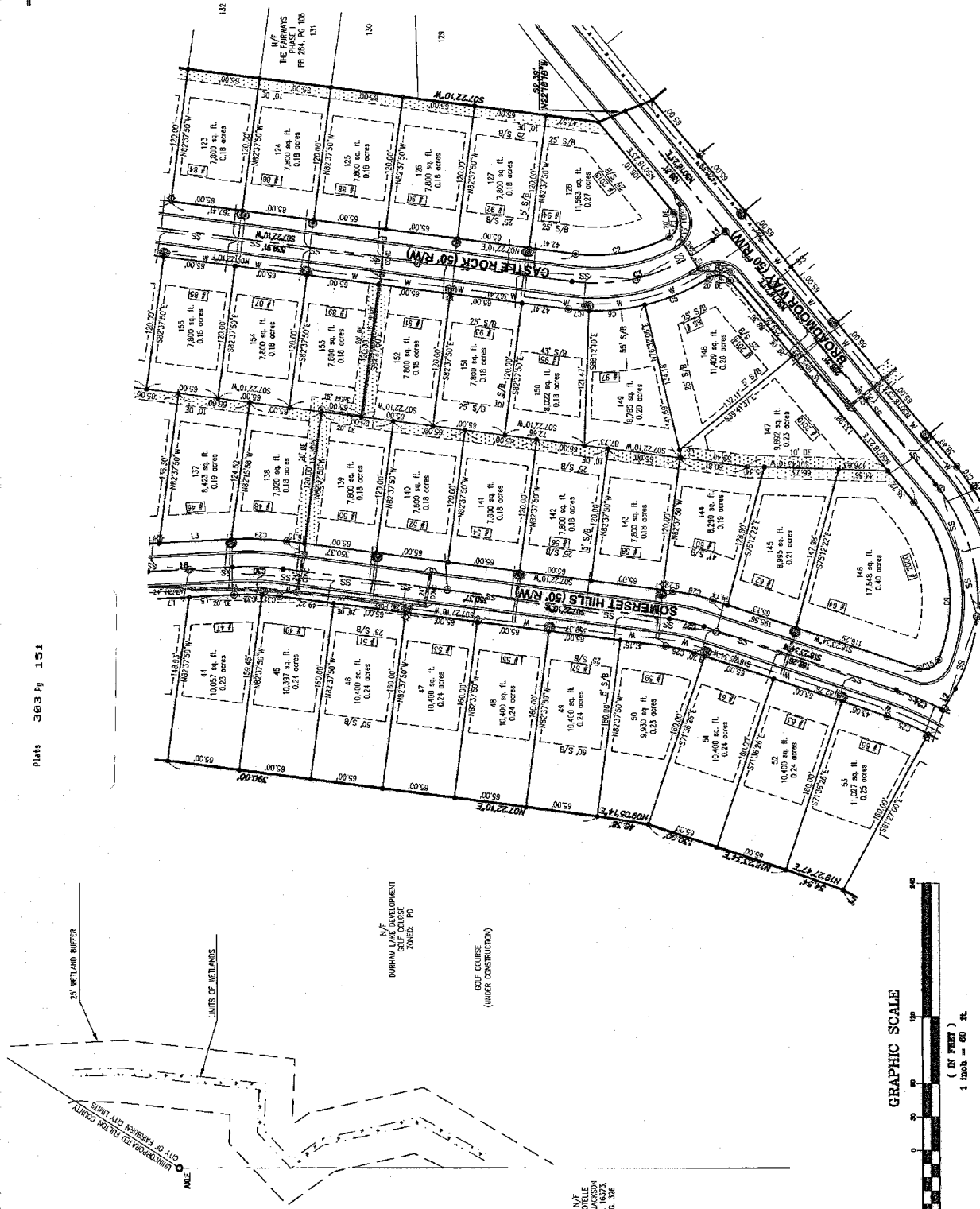
DATE	4/11/05	REVISIONS	1. 1.7-4-05 Addressed city comments PHC
FILE #	01-031	CONTRACT #	688-003-04
DRAWN BY	PHC	CHECKED BY	WHP/ewes

9683PLAT IV REV PL.DWG

© Moore Bass Consulting

LEGEND

- IRON PIN FOUND (BY)
- 1/2" BEARS PLACED/YELLOW CAP STOPPED (BY)
- COMPOUND POINT
- POWER POLE
- LIGHT POLE
- SEWER MANHOLE
- SANITARY SEWER LINE
- FIRE HYDRANT
- WATER VALVE
- WATER LINE
- WATER STUBOUT
- SEWER STUBOUT
- JUNCTION BOX
- DOUBLE WING CATCH BASIN
- SHIELD WING CATCH BASIN
- NOW OR FORMERLY
- POINT OF COMMENCEMENT
- POINT OF BEGINNING
- U.L. SURVEY POINT
- S.W. CORNER
- S/E CORNER
- S/W CORNER
- S/E CORNER
- S/W CORNER
- RADIUS
- PLAT BOOK
- PAGE
- PAGE
- WEIWAYS
- FLOOD LIMITS



Plat 303 Pg 151

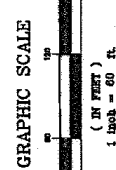
25 WETLAND BUFFER

LIMITS OF WETLANDS

DURHAM LAKE DEVELOPMENT
ZONED: PD

OLF COUSES
(UNDER CONSTRUCTION)

N/E
ROTELE
RE JACKSON
PLAT 208
PG. 208



<p>DATE 9/20/05</p> <p>FILE # 01-031</p> <p>CONTRACT # 697,102</p> <p>DRAWN BY PHC</p> <p>CHECKED BY WAF</p>	<p>REVISIONS</p> <p>1. 05-24-05 Addressed city comments PHC</p> <p>2. 7-8-05 Added light poles & moved addresses</p> <p>3. 4-5-06 Removed 001' outside area</p>	<p>8683PLAT 3B rev 4-06.dwg</p>	<p>MB</p>	<p>SEAL</p> <p>REGISTERED PROFESSIONAL ENGINEER No. 3891 STATE OF GEORGIA</p>	<p>SHEET TITLE</p> <p>Final Subdivision Plat</p> <p>Land Lot 153 - 7th District City of Fairburn-Fulton County, Georgia</p>	<p>PROJECT</p> <p>The Fairways Unit 5-Phase II</p> <p>CLIENT NAME</p> <p>Old Towne Dev. Builders, LLC 136 South Main Street Jonesboro, GA 30236</p>	<p>MOORE BASS</p> <p>CONSULTING ATLANTA TALLAHASSEE DESTIN JACKSONVILLE 329 INDUSTRIAL BLVD., MACON, GA 31206 PH: 770-935-1433</p>	<p>SHEET 3 OF 4</p>
--	---	---------------------------------	------------------	--	--	---	---	----------------------------



