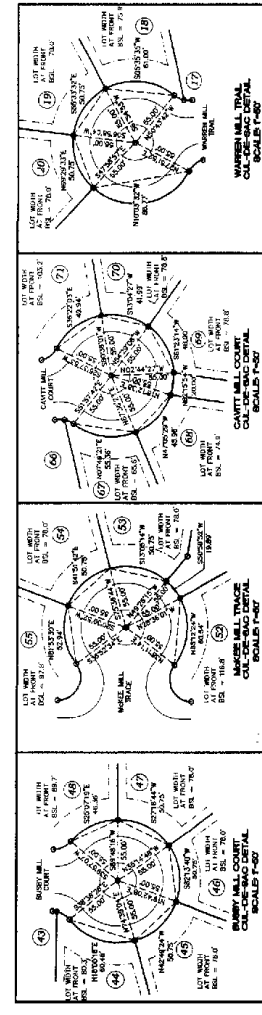
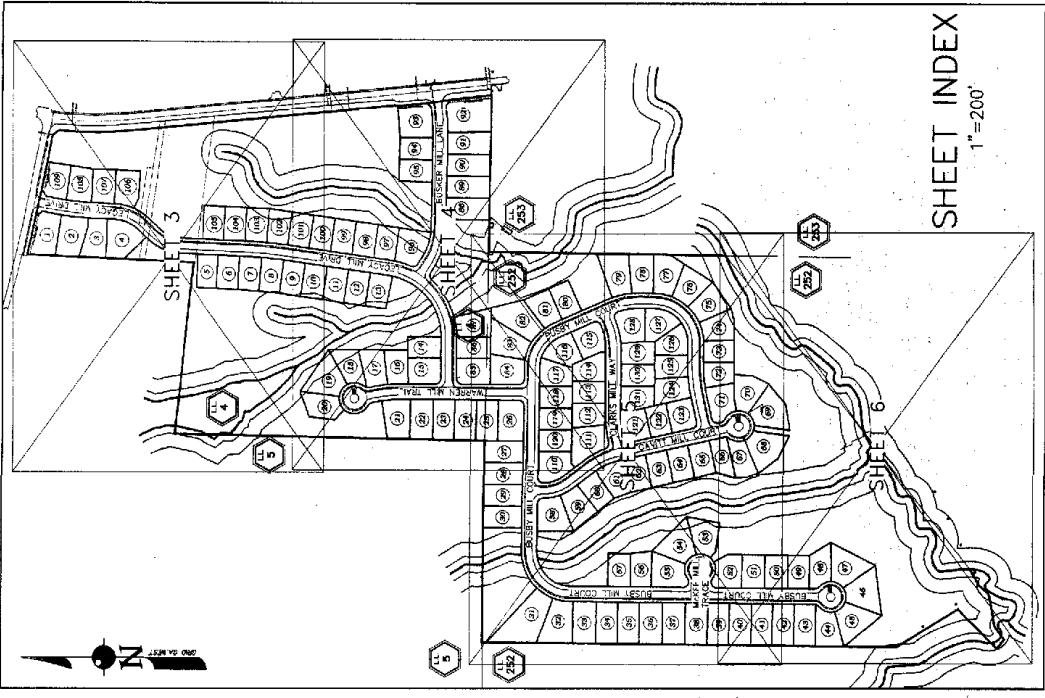


No.	REVISION	DATE

SEI
SOUTHEASTERN ENGINEERING
 Civil & Environmental Engineering, Land Surveying
 4000 South Main Street, Suite 100
 Mobile, Alabama 36688
 Tel: 978-921-8998, Fax: 770-221-3888

LEGACY MILL
 FINAL PLAT OF
 LOCATED IN LAND LOT 4 OF THE 15th DISTRICT
 CHALMERS COUNTY, GEORGIA
 PLAT INFORMATION: SCALE 1"=200' DATE: 05/22/08
 PROPERTY INFORMATION:
 THIS BOOK 3 PAGES 810
 SHEET 2 OF 6

LEGACY MILL
 FINAL PLAT OF
 LOCATED IN LAND LOT 4 OF THE 15th DISTRICT
 CHALMERS COUNTY, GEORGIA
 PLAT INFORMATION: SCALE 1"=200' DATE: 05/22/08
 PROPERTY INFORMATION:
 THIS BOOK 3 PAGES 810
 SHEET 2 OF 6



STRUCTURE NO.	AREA ELEV.	INVEST. IN	INVEST. OUT	PIPE MATERIAL	PIPE SIZE	SLOPE %
101	101.00	101.00	101.00	12" PVC	12"	0.25
102	102.00	102.00	102.00	12" PVC	12"	0.25
103	103.00	103.00	103.00	12" PVC	12"	0.25
104	104.00	104.00	104.00	12" PVC	12"	0.25
105	105.00	105.00	105.00	12" PVC	12"	0.25
106	106.00	106.00	106.00	12" PVC	12"	0.25
107	107.00	107.00	107.00	12" PVC	12"	0.25
108	108.00	108.00	108.00	12" PVC	12"	0.25
109	109.00	109.00	109.00	12" PVC	12"	0.25
110	110.00	110.00	110.00	12" PVC	12"	0.25
111	111.00	111.00	111.00	12" PVC	12"	0.25
112	112.00	112.00	112.00	12" PVC	12"	0.25
113	113.00	113.00	113.00	12" PVC	12"	0.25
114	114.00	114.00	114.00	12" PVC	12"	0.25
115	115.00	115.00	115.00	12" PVC	12"	0.25
116	116.00	116.00	116.00	12" PVC	12"	0.25
117	117.00	117.00	117.00	12" PVC	12"	0.25
118	118.00	118.00	118.00	12" PVC	12"	0.25
119	119.00	119.00	119.00	12" PVC	12"	0.25
120	120.00	120.00	120.00	12" PVC	12"	0.25
121	121.00	121.00	121.00	12" PVC	12"	0.25
122	122.00	122.00	122.00	12" PVC	12"	0.25
123	123.00	123.00	123.00	12" PVC	12"	0.25
124	124.00	124.00	124.00	12" PVC	12"	0.25
125	125.00	125.00	125.00	12" PVC	12"	0.25
126	126.00	126.00	126.00	12" PVC	12"	0.25
127	127.00	127.00	127.00	12" PVC	12"	0.25
128	128.00	128.00	128.00	12" PVC	12"	0.25
129	129.00	129.00	129.00	12" PVC	12"	0.25
130	130.00	130.00	130.00	12" PVC	12"	0.25
131	131.00	131.00	131.00	12" PVC	12"	0.25
132	132.00	132.00	132.00	12" PVC	12"	0.25
133	133.00	133.00	133.00	12" PVC	12"	0.25
134	134.00	134.00	134.00	12" PVC	12"	0.25
135	135.00	135.00	135.00	12" PVC	12"	0.25
136	136.00	136.00	136.00	12" PVC	12"	0.25
137	137.00	137.00	137.00	12" PVC	12"	0.25
138	138.00	138.00	138.00	12" PVC	12"	0.25
139	139.00	139.00	139.00	12" PVC	12"	0.25
140	140.00	140.00	140.00	12" PVC	12"	0.25
141	141.00	141.00	141.00	12" PVC	12"	0.25
142	142.00	142.00	142.00	12" PVC	12"	0.25
143	143.00	143.00	143.00	12" PVC	12"	0.25
144	144.00	144.00	144.00	12" PVC	12"	0.25
145	145.00	145.00	145.00	12" PVC	12"	0.25
146	146.00	146.00	146.00	12" PVC	12"	0.25
147	147.00	147.00	147.00	12" PVC	12"	0.25
148	148.00	148.00	148.00	12" PVC	12"	0.25
149	149.00	149.00	149.00	12" PVC	12"	0.25
150	150.00	150.00	150.00	12" PVC	12"	0.25
151	151.00	151.00	151.00	12" PVC	12"	0.25
152	152.00	152.00	152.00	12" PVC	12"	0.25
153	153.00	153.00	153.00	12" PVC	12"	0.25
154	154.00	154.00	154.00	12" PVC	12"	0.25
155	155.00	155.00	155.00	12" PVC	12"	0.25
156	156.00	156.00	156.00	12" PVC	12"	0.25
157	157.00	157.00	157.00	12" PVC	12"	0.25
158	158.00	158.00	158.00	12" PVC	12"	0.25
159	159.00	159.00	159.00	12" PVC	12"	0.25
160	160.00	160.00	160.00	12" PVC	12"	0.25
161	161.00	161.00	161.00	12" PVC	12"	0.25
162	162.00	162.00	162.00	12" PVC	12"	0.25
163	163.00	163.00	163.00	12" PVC	12"	0.25
164	164.00	164.00	164.00	12" PVC	12"	0.25
165	165.00	165.00	165.00	12" PVC	12"	0.25
166	166.00	166.00	166.00	12" PVC	12"	0.25
167	167.00	167.00	167.00	12" PVC	12"	0.25
168	168.00	168.00	168.00	12" PVC	12"	0.25
169	169.00	169.00	169.00	12" PVC	12"	0.25
170	170.00	170.00	170.00	12" PVC	12"	0.25
171	171.00	171.00	171.00	12" PVC	12"	0.25
172	172.00	172.00	172.00	12" PVC	12"	0.25
173	173.00	173.00	173.00	12" PVC	12"	0.25
174	174.00	174.00	174.00	12" PVC	12"	0.25
175	175.00	175.00	175.00	12" PVC	12"	0.25
176	176.00	176.00	176.00	12" PVC	12"	0.25
177	177.00	177.00	177.00	12" PVC	12"	0.25
178	178.00	178.00	178.00	12" PVC	12"	0.25
179	179.00	179.00	179.00	12" PVC	12"	0.25
180	180.00	180.00	180.00	12" PVC	12"	0.25
181	181.00	181.00	181.00	12" PVC	12"	0.25
182	182.00	182.00	182.00	12" PVC	12"	0.25
183	183.00	183.00	183.00	12" PVC	12"	0.25
184	184.00	184.00	184.00	12" PVC	12"	0.25
185	185.00	185.00	185.00	12" PVC	12"	0.25
186	186.00	186.00	186.00	12" PVC	12"	0.25
187	187.00	187.00	187.00	12" PVC	12"	0.25
188	188.00	188.00	188.00	12" PVC	12"	0.25
189	189.00	189.00	189.00	12" PVC	12"	0.25
190	190.00	190.00	190.00	12" PVC	12"	0.25
191	191.00	191.00	191.00	12" PVC	12"	0.25
192	192.00	192.00	192.00	12" PVC	12"	0.25
193	193.00	193.00	193.00	12" PVC	12"	0.25
194	194.00	194.00	194.00	12" PVC	12"	0.25
195	195.00	195.00	195.00	12" PVC	12"	0.25
196	196.00	196.00	196.00	12" PVC	12"	0.25
197	197.00	197.00	197.00	12" PVC	12"	0.25
198	198.00	198.00	198.00	12" PVC	12"	0.25
199	199.00	199.00	199.00	12" PVC	12"	0.25
200	200.00	200.00	200.00	12" PVC	12"	0.25

STRUCTURE NO.	AREA ELEV.	INVEST. IN	INVEST. OUT	PIPE MATERIAL	PIPE SIZE	SLOPE %
201	201.00	201.00	201.00	12" PVC	12"	0.25
202	202.00	202.00	202.00	12" PVC	12"	0.25
203	203.00	203.00	203.00	12" PVC	12"	0.25
204	204.00	204.00	204.00	12" PVC	12"	0.25
205	205.00	205.00	205.00	12" PVC	12"	0.25
206	206.00	206.00	206.00	12" PVC	12"	0.25
207	207.00	207.00	207.00	12" PVC	12"	0.25
208	208.00	208.00	208.00	12" PVC	12"	0.25
209	209.00	209.00	209.00	12" PVC	12"	0.25
210	210.00	210.00	210.00	12" PVC	12"	0.25
211	211.00	211.00	211.00	12" PVC	12"	0.25
212	212.00	212.00	212.00	12" PVC	12"	0.25
213	213.00	213.00	213.00	12" PVC	12"	0.25
214	214.00	214.00	214.00	12" PVC	12"	0.25
215	215.00	215.00	215.00	12" PVC	12"	0.25
216	216.00	216.00	216.00	12" PVC	12"	0.25
217	217.00	217.00	217.00	12" PVC	12"	0.25
218	218.00	218.00	218.00	12" PVC	12"	0.25
219	219.00	219.00	219.00	12" PVC	12"	0.25
220	220.00	220.00	220.00	12" PVC	12"	0.25
221	221.00	221.00	221.00	12" PVC	12"	0.25
222	222.00	222.00	222.00	12" PVC	12"	0.25
223	223.00	223.00	223.00	12" PVC	12"	0.25
224	224.00	224.00	224.00	12" PVC	12"	0.25
225	225.00	225.00	225.00	12" PVC	12"	0.25
226	226.00	226.00	226.00	12" PVC	12"	0.25
227	227.00	227.00	227.00	12" PVC	12"	0.25
228	228.00	228.00	228.00	12" PVC	12"	0.25
229	229.00	229.00	229.00	12" PVC	12"	0.25
230	230.00	230.00	230.00	12" PVC	12"	0.25
231	231.00	231.00	231.00	12" PVC	12"	0.25
232	232.00	232.00	232.00	12" PVC	12"	0.25
233	233.00	233.00	233.00	12" PVC	12"	0.25
234	234.00	234.00	234.00	12" PVC	12"	0.25
235	235.00	235.00	235.00	12" PVC	12"	0.25
236	236.00	236.00	236.00	12" PVC	12"	0.25
237	237.00	237.00	237.00	12" PVC	12"	0.25
238	238.00	238.00	238.00	12" PVC	12"	0.25
239	239.00	239.00	239.00	12" PVC	12"	0.25
240	240.00	240.00	240.00	12" PVC	12"	0.25
241	241.00	241.00	241.00	12" PVC	12"	0.25
242	242.00	242.00	242.00	12" PVC	12"	0.25
243	243.00	243.00	243.00	12" PVC	12"	0.25
244	244.00	244.00	244.00	12" PVC	12"	0.25
245	245.00	245.00	245.00	12" PVC	12"	0.25
246	246.00	246.00	246.00	12" PVC	12"	0.25
247	247.00	247.00	247.00	12" PVC	12"	0.25
248	248.00	248.00	248.00	12" PVC	12"	0.25
249	249.00	249.00	249.00	12" PVC	12"	0.25
250	250.00	250.00	250.00	12" PVC	12"	0.25
251	251.00	251.00	251.00	12" PVC	12"	0.25
252	252.00	252.00	252.00	12" PVC	12"	0.25
253	253.00	253.00	253.00	12" PVC	12"	0.25
254	254.00	254.00	254.00	12" PVC	12"	0.25
255	255.00	255.00	255.00	12" PVC	12"	0.25
256	256.00	256.00	256.00	12" PVC	12"	0.25
257	257.00	257.00	257.00	12" PVC	12"	0.25
258	258.00	258.00	258.00	12" PVC	12"	0.25
259	259.00	259.00	259.00	12" PVC	12"	0.25
260	260.00	260.00	260.00			

DCR-0062908

AP#6708

Dekalb County, Contract Ab. 06-890115



LEGACY MILL

FINAL PLAT OF
SUBDIVISION
LOCATED IN LAND LOT 132 OF THE 12th DISTRICT
DEKALB COUNTY, GEORGIA

SCALE: 1"=50' DATE: 05/29/08
THIS PLAT IS A REVISION OF THE PLAT OF LEGACY MILL, DEKALB COUNTY, GEORGIA, DATED 05/29/08, AND IS SUBJECT TO THE REVISIONS AND NOTES THEREON.
THE PLAT IS SUBJECT TO THE DEKALB COUNTY ZONING ORDINANCES AND THE DEKALB COUNTY SUBDIVISION ACT.
THE PLAT IS SUBJECT TO THE DEKALB COUNTY RECORDS AND THE DEKALB COUNTY CLERK'S OFFICE.
THE PLAT IS SUBJECT TO THE DEKALB COUNTY RECORDS AND THE DEKALB COUNTY CLERK'S OFFICE.
THE PLAT IS SUBJECT TO THE DEKALB COUNTY RECORDS AND THE DEKALB COUNTY CLERK'S OFFICE.

SEI
SOUTHEASTERN ENGINEERING
Civil & Environmental Engineering, Land Surveying
1000 Peachtree Street, N.E.
Atlanta, Georgia 30309
Phone: 404.525.7700
Fax: 404.525.7701

No.	REVISION	BY	DATE

